



Parts Manual

Mfg. No: 030205-0
5,800 Watt Briggs & Stratton

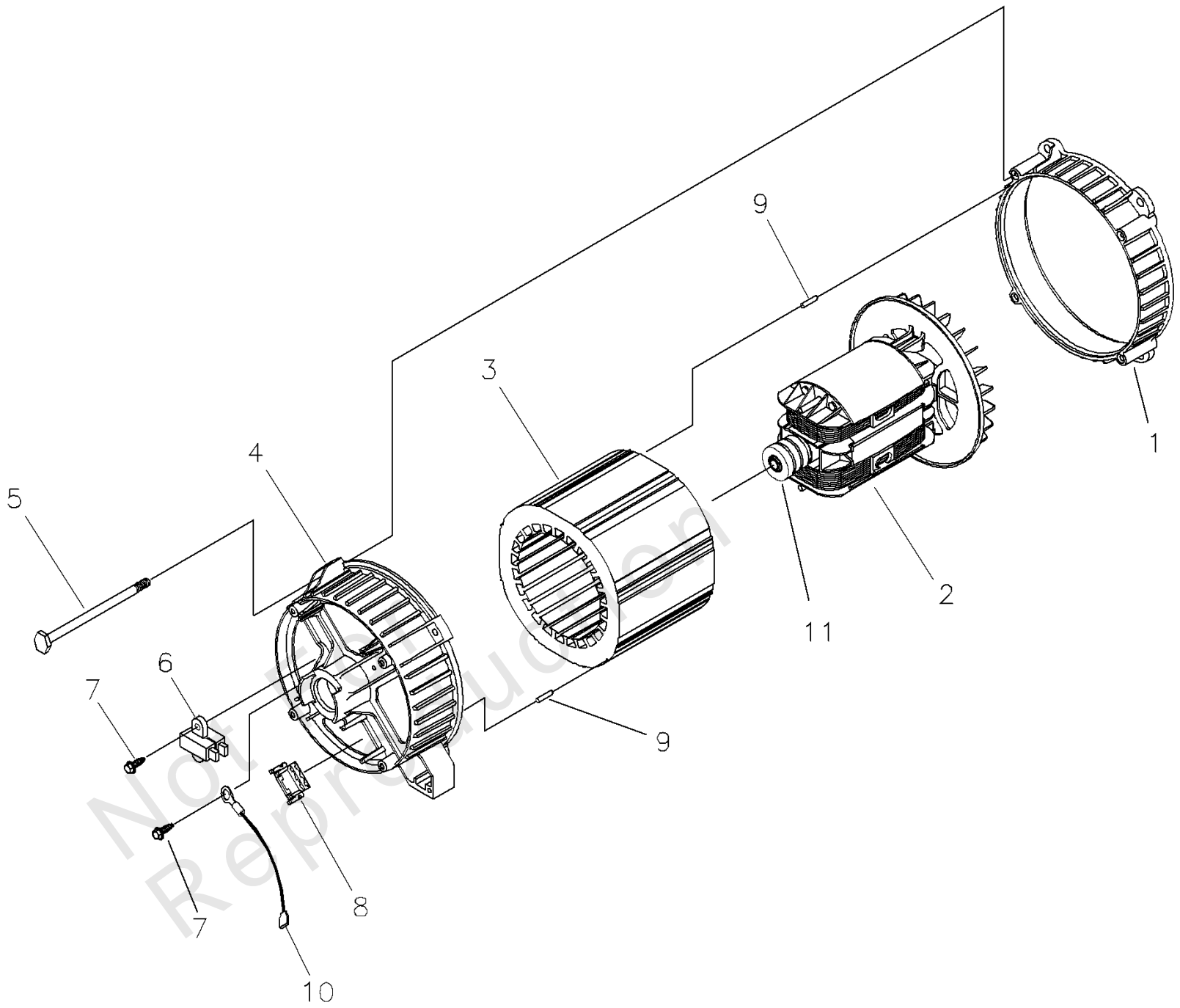
Model Components	Page
Alternator (199732).....	4
Control Panel (199731).....	6
Main Unit (199730).....	8
Wiring Diagram (199729).....	12
Wiring Schematic (199729).....	14
Torque Specification Chart.....	16

Not For
Reproduction

Alternator (199732)

Note: Unless noted otherwise, use the standard torque specifications

Mfg. No: 030205-0



Alternator (199732)

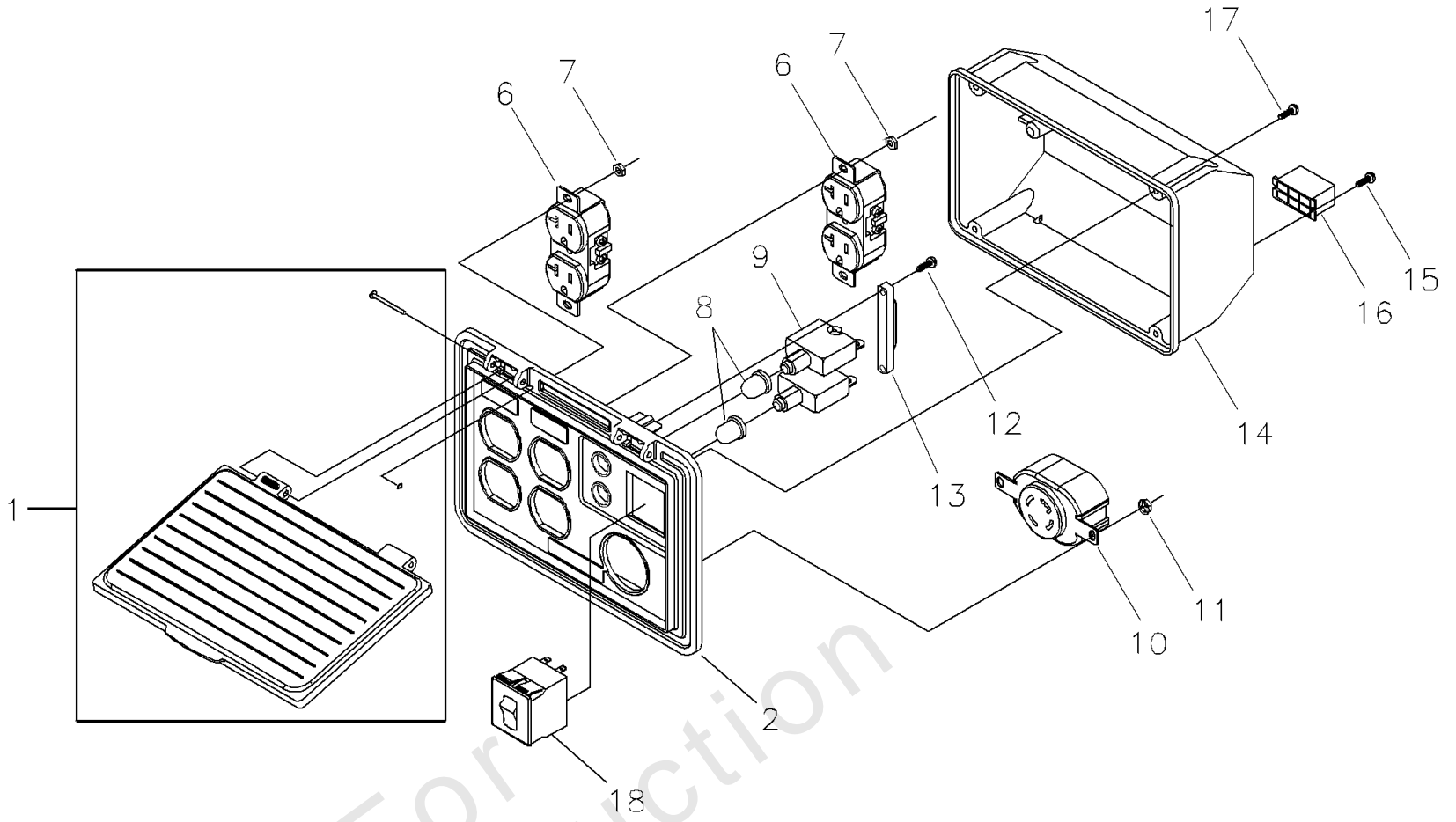
REF NO	PART NO	QTY	DESCRIPTION
1	186059GS		ADAPTER, Mounting,Alternator
2	199859GS		ROTOR -(Includes Item 11)
3	190079AGS		STATOR
4	186060GS		RBC, with O-Ring (p/n 189197GS)
5	86308HGS		HHCS, M6 - 1.0 x 140 SEMS
6	91825GS		ASSY, Holder, Rectifier/Brush
7	66849GS		TAPTITE, M5 - 0.8 x 16
8	22694GS		RECEPTACLE, 6 pin
9	81917GS		PIN, Roll, 4mm x 10
10	193428AGS		ASSY,Wire, Ground
11	65791GS		BEARING

Not For
Reproduction

Control Panel (199731)

Note: Unless noted otherwise, use the standard torque specifications

Mfg. No: 030205-0



Control Panel (199731)

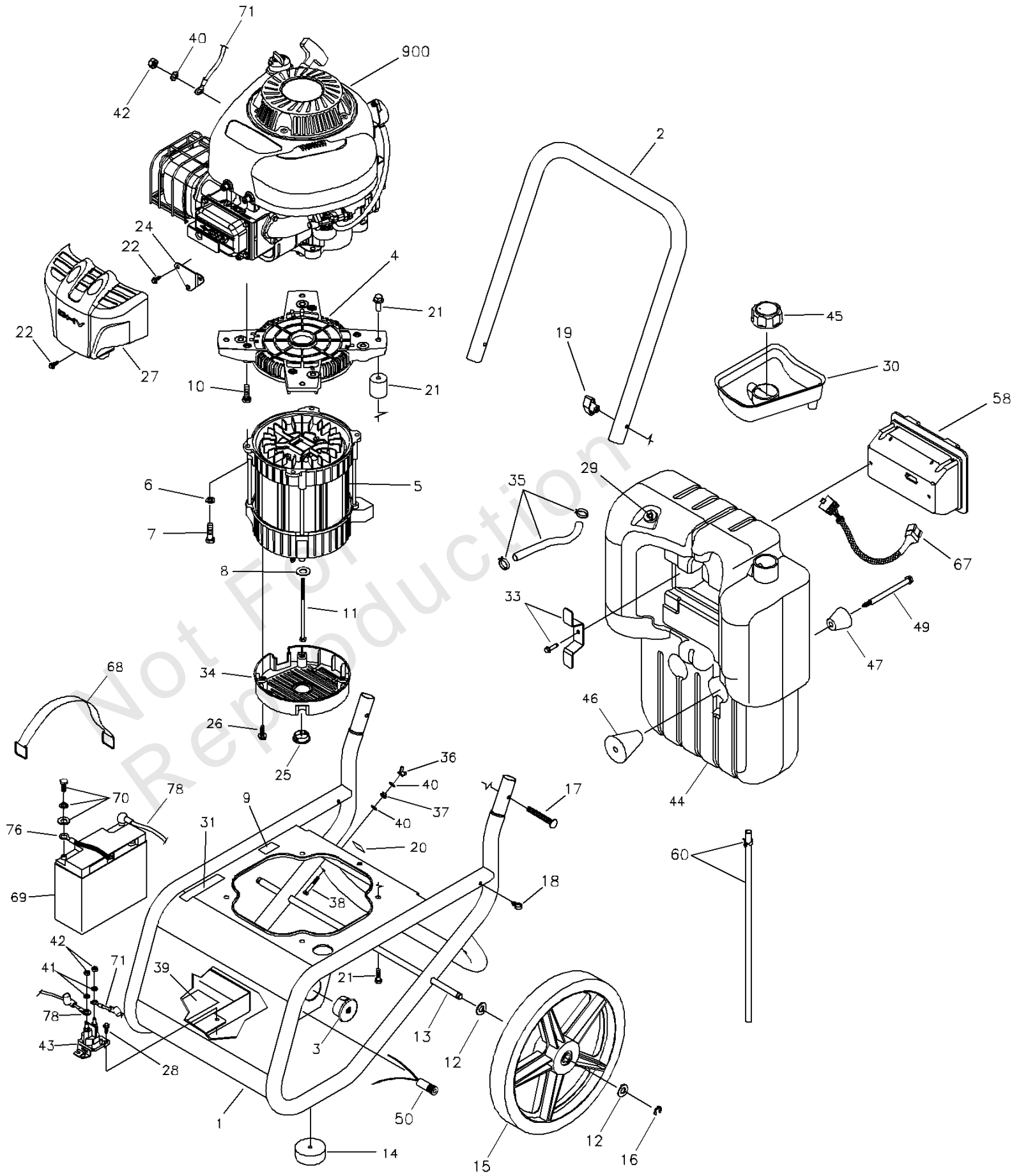
REF NO	PART NO	QTY	DESCRIPTION
1	195112GS		ASSY, Control Lid Panel
2	192273EGS		PANEL, Control, Compact
6	68759GS		OUTLET, 120V, 20A, Duplex
7	-		NUT, Palnut, Pushnut, 5/32 -(Purchase locally)
8	84198GS		CAP, Breaker, Circuit
9	75207PGS		BREAKER, Circuit
10	43437GS		OUTLET, 120/240V Locking, 30A
11	-		NUT, Palnut, Pushnut, 3/16 -(Purchase locally)
12	-		PPHMS, 3.5 x 18 -(Purchase locally)
13	93857GS		BAR, Retaining
14	192274GS		BOX, Rear Cover
15	82308GS		SCREW,Tapping, STC 3 x 18
16	22694GS		HOUSING, Receptacle
17	192241GS		SCREW,Tapping, 3.5 x 14
18	191479BGS		BREAKER, Circuit, 25A

Not For
Reproduction

Main Unit (199730)

Note: Unless noted otherwise, use the standard torque specifications

Mfg. No: 030205-0



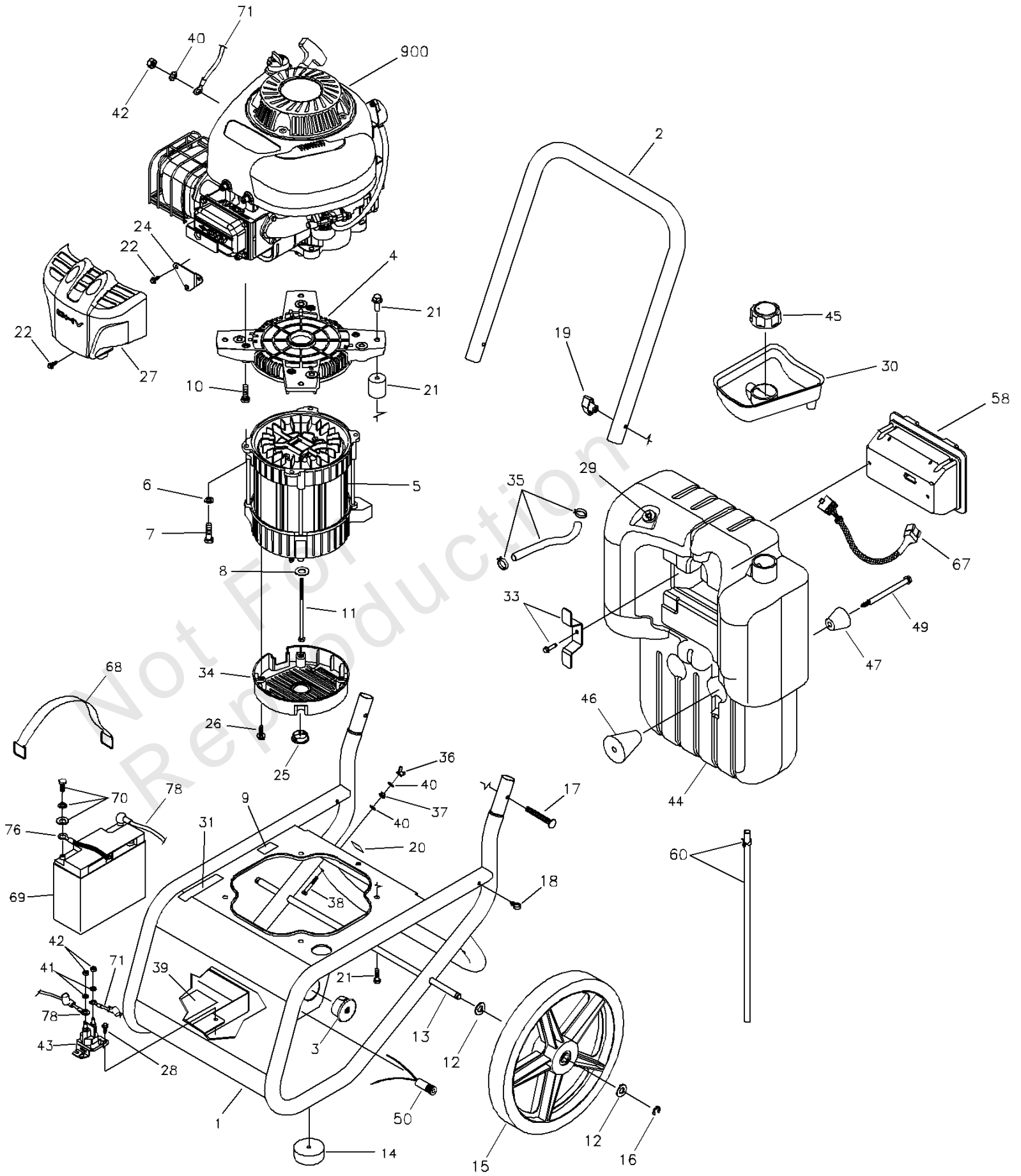
Main Unit (199730)

REF NO	PART NO	QTY	DESCRIPTION
1	J199622GS		KIT, Cradle
2	J194925GS		HANDLE
3	199507GS		SWITCH, Key
4	191793GS		ADAPTER, Engine
5	~NSP		ASSY, Alternator -(see "Alternator")
6	-		WASHER, Lock, 5/16 - M8 -(Purchase locally)
7	-		HHCS, 5/16-18 x 1 -(Purchase locally)
8	96796GS		WASHER, 8.4 x 22.2 x 3
9	186649GS		DECAL, Oil Drain
10	75246GS		TAPTITE, 3/8 - 16 x 1-1/4
11	187365BGS		HHCS, 5/16-24 x 8.62
12	-		WASHER, 1/2 -(Purchase locally)
13	196914GS		AXLE
14	192553GS		KIT, Vibration Mount Hardware -(2 sets)
15	191908GS		WHEEL
16	192050GS		E-RING
17	31669GS		BOLT, Carriage, 1/4-20 x 1-3/4
18	195733GS		MOUNT, Tiewrap
19	194289GS		KNOB, Handle
20	B4986GS		DECAL, Ground
21	194727GS		KIT,Vibration Mount
22	93343GS		SCREW, Hex Head Tapping
24	198975GS		BRACKET, Mounting Head Guard
25	191190GS		CAP, Bolt, Rotor
26	74908GS		TAPTITE, M5 - 0.8 x 10
27	199496GS		GUARD, Head
28	B4300GS		HHS, Trilobular, 1/4 - 20 x 1/2
29	196063GS		ASSY, Tube Lift
30	192921GS		SHIELD, Fuel Fill
31	196830GS		DECAL, Caution Exhaust
32	193504GS		DECAL, Battery Instructions
33	194721GS		KIT, Retaining Brckt with Hardware
34	191029GS		COVER, RBC, Plastic
35	791745		KIT, Fuel Line w/ Clamps (cut to fit)
36	87680GS		NUT, M6 - 1.0 Wing
37	-		NUT, M6 - 1.0 Lock -(Purchase locally)
38	-		HHCS, M6-1.0 x 55 -(Purchase locally)
39	198874GS		TAPE, Foam, Battery Tray
40	-		WASHER, Shakeproof, Ext. M6 - 1/4 -(Purchase locally)
41	-		WASHER, Lock, 1/4 - M6 -(Purchase locally)
42	-		NUT, 1/4-20 -(Purchase locally)
43	691656		SOLENOID/BRACKET
44	193345GS		ASSY,Tank, 7-Gallon, with Labels
45	90878GS		CAP, Fuel Tank

Main Unit (199730)

Note: Unless noted otherwise, use the standard torque specifications

Mfg. No: 030205-0



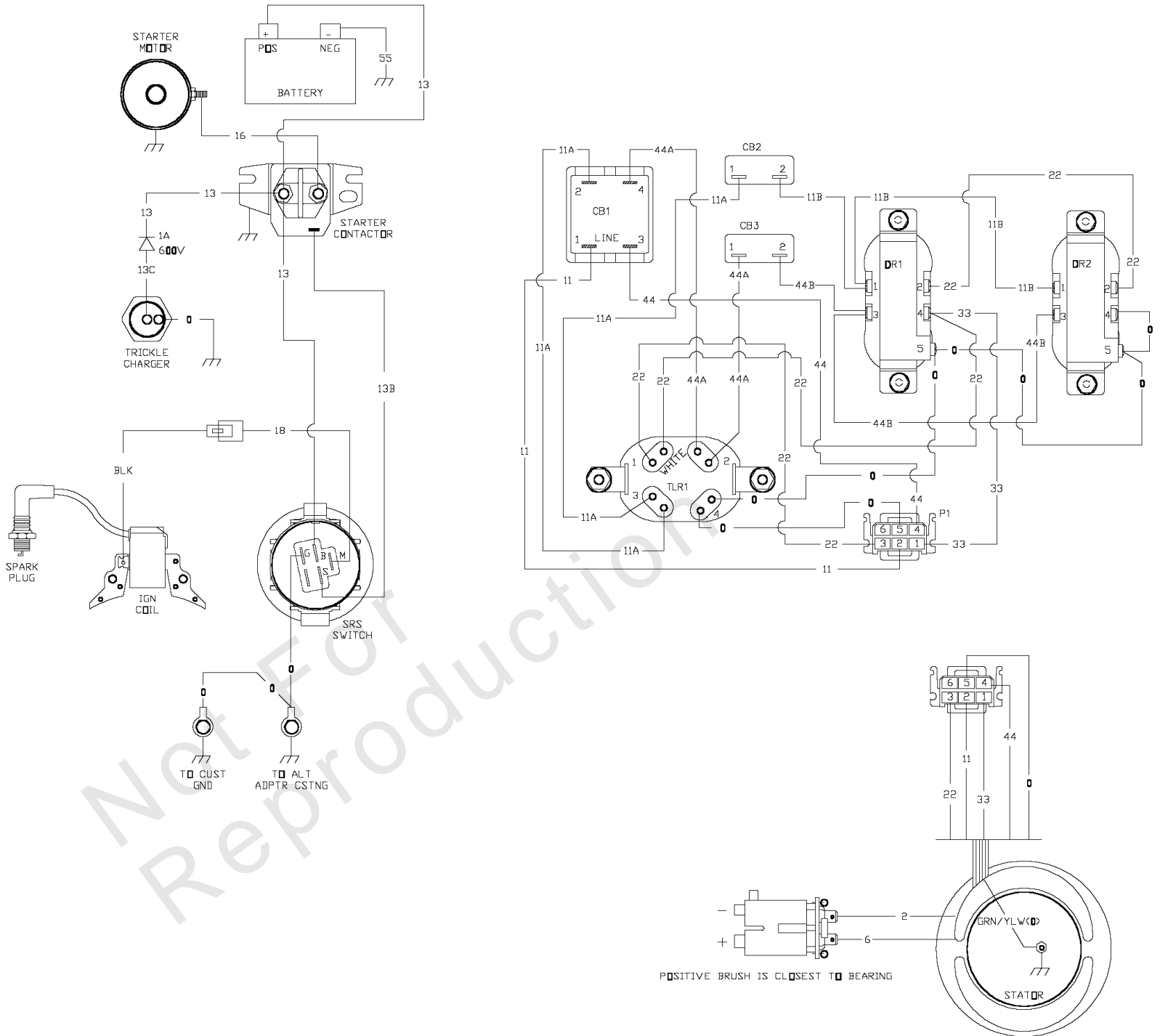
Main Unit (199730)

REF NO	PART NO	QTY	DESCRIPTION
46	195340GS		MOUNT, Vibration, Inner
47	195341GS		MOUNT, Vibration, Outer
49	195342GS		SCREW, 5/16 - 18 x 5.25, Taptite
50	198925GS		ASSY, Jack Coaxial, DC
58	199463GS		ASSY, Control Panel -(see "Control Panel")
60	200445GS		KIT, Overflow Fuel Hose w/ Clamp
67	192809GS		HARNESS, AC
68	196569GS		STRAP, Battery Hold Down
69	193463GS		BATTERY, 12V w/Hardware
70	193347GS		KIT, Hardware Battery
71	189302JGS		CABLE, Red, Solenoid to Starter
76	185939SGS		CABLE, Blk, Battery to Engine
78	189302MGS		CABLE, Red, Battery to Solenoid
900	-		ENGINE -Contact Engine Manufacturer
	196997GS		MANUAL, Operator's -Not Illustrated
	MS5936		MANUAL, Engine -Not Illustrated
	28739AGS		TIEWRAP, Overflow Hose -Not Illustrated
	200446GS		KIT, Decals -Not Illustrated
	199384GS		DECAL, Family, CA, EVP -Not Illustrated
	195247GS		DECAL, Warning -Not Illustrated
	192808GS		DECAL, Instructions Fuel Level -Not Illustrated
	B4177GS		CHARGE, Battery -Not Illustrated
	691959		KEY, Ignition -Not Illustrated
	100031		STABILIZER, Fuel -Optional Accessories

Wiring Diagram (199729)

Note: Unless noted otherwise, use the standard torque specifications

Mfg. No: 030205-0



Wiring Diagram (199729)

REF NO	PART NO	QTY	DESCRIPTION
--	-		Wiring Diagram only
--	-		Warning Generator Voltage Could Cause Electrical Shock or Burn Resulting in Death Or Serious Injury. To Avoid Electrical Shock Or Burn Hazard, Please Refer Service To Qualified Personnel.

Not For
Reproduction

Wiring Schematic (199729)

REF NO	PART NO	QTY	DESCRIPTION
--	-		Wiring Schematic only
--	WARNING		Warning Generator Voltage Could Cause Electrical Shock or Burn Resulting in Death Or Serious Injury. To Avoid Electrical Shock Or Burn Hazard, Please Refer Service To Qualified Personnel.

Not For
Reproduction

Hardware Identification & Torque Specifications

Torque Specification Chart								
FOR STANDARD METRIC MACHINE HARDWARE (Tolerance ± 20%)								
Property Class	5.6		8.8		10.9		12.9	
	Class 5.6		Class 8.8		Class 10.9		Class 12.9	
Size Of Hardware	in/lbs	Nm.	in/lbs	Nm.	in/lbs	Nm.	in/lbs	Nm.
	ft/lbs		ft/lbs		ft/lbs		ft/lbs	
M3	5.88	.56	13.44	1.28	19.2	1.80	22.92	2.15
M4	13.44	1.28	30.72	2.90	43.44	4.10	52.56	4.95
M5	26.4	2.50	60.96	5.75	5.97	8.10	7.15	9.7
M6	44.64	4.3	7.3	9.9	10.3	14	12.1	16.5
M7	5.2	7.1	12.1	16.5	16.9	23	19.9	27
M8	7.7	10.5	17.7	24	25	34	29	40
M10	15	21	35	48	50	67	59	81
M12	26	36	61	83	86.2	117	103	140
M14	42	58	101	132	136	185	162	220
M16	64	88	147	200	210	285	250	340
M18	89	121	202	275	287	390	346	470
M20	126	171	290	390	405	550	486	660
M22	169	230	390	530	559	745	656	890
M24	217	295	497	375	708	960	840	1140
M27	320	435	733	995	1032	1400	1239	1680
M30	435	590	995	1350	1401	1900	1681	2280
M33	590	800	1349	1830	1902	2580	2278	3090
M36	759	1030	1740	2360	2441	3310	2935	3980
M39	988	1340	2249	3050	3163	4290	3798	5150

Torque Specification Chart						
FOR STANDARD MACHINE HARDWARE (Tolerance ± 20%)						
Hardware Grade	No Marks		SAE Grade 5		SAE Grade 8	
	SAE Grade 2		SAE Grade 5		SAE Grade 8	
Size Of Hardware	in/lbs	Nm.	in/lbs	Nm.	in/lbs	Nm.
	ft/lbs		ft/lbs		ft/lbs	
8-32	19	2.1	30	3.4	41	4.6
8-36	20	2.3	31	3.5	43	4.9
10-24	27	3.1	43	4.9	60	6.8
10-32	31	3.5	49	5.5	68	7.7
1/4-20	66	7.6	8	10.9	12	16.3
1/4-28	76	8.6	10	13.6	14	19.0
5/16-18	11	15.0	17	23.1	25	34.0
5/16-24	12	16.3	19	25.8	29	34.0
3/8-16	20	27.2	30	40.8	45	61.2
3/8-24	23	31.3	35	47.6	50	68.0
7/16-14	30	40.8	50	68.0	70	95.2
7/16-20	35	47.6	55	74.8	80	108.8
1/2-13	50	68.0	75	102.0	110	149.6
1/2-20	55	74.8	90	122.4	120	163.2
9/16-12	65	88.4	110	149.6	150	204.0
9/16-18	75	102.0	120	163.2	170	231.2
5/8-11	90	122.4	150	204.0	220	299.2
5/8-18	100	136	180	244.8	240	326.4
3/4-10	160	217.6	260	353.6	386	525.0
3/4-16	180	244.8	300	408.0	420	571.2
7/8-9	140	190.4	400	544.0	600	816.0
7/8-14	155	210.8	440	598.4	660	897.6
1-8	220	299.2	580	788.8	900	1,244.0
1-12	240	326.4	640	870.4	1,000	1,360.0

The guides and ruler furnished below are designed to help you select the appropriate hardware.

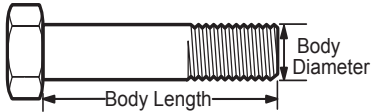


Nut, M8

Thread Diameter (mm)

Inside Diameter (in) Threads per inch

Nut, 1/2-16



Screw, M8- 1.25 x 25

Thread Diameter (mm) Distance between threads (mm) Body Length (mm)

Body Diameter Threads per inch Body Length (in)

Screw, 1/2- 16 x 2



Standard Hardware Sizing

When a washer or nut is identified as 1/2" (M8), this is the *Nominal size*, meaning the *inside diameter* is 1/2 inch (8mm metric thread diameter); if a second number is present it represents the *threads per inch* (distance between threads).

When bolt or capscrew is identified as 1/2 - 16 x 2" (M8 - 1.25 x 50), this means the *Nominal size*, or body diameter is 1/2 inch (8mm metric thread diameter), the second number, 16, represents the *threads per inch*, (*distance between threads*). The final number is the body length of the bolt or screw, 2 inches (50mm).

NOTES

- These torque values are to be used for all hardware excluding: locknuts, self-tapping screws, thread forming screws, sheet metal screws and socket head setscrews.
- Recommended seating torque values for locknuts:
 - for prevailing torque locknuts - use 65% of grade 5 torques.
 - for flange whizlock nuts and screws - use 135% of grade 5 torques.
- Unless otherwise noted on assembly drawings, all torque values must meet this specification.

Common Hardware Types

Hex Head Capscrew



Washer



Carriage Bolt



Hex Nut

Wrench & Fastener Size Guide

1/4" Bolt or Nut Wrench—7/16"	5/16" Bolt or Nut Wrench—1/2"	3/8" Bolt or Nut Wrench—9/16"	7/16" Bolt or Nut Wrench (Bolt)—5/8" Wrench (Nut)—11/16"	1/2" Bolt or Nut Wrench—3/4"
M6 Bolt or Nut Wrench—10mm	M8 Bolt or Nut Wrench—13mm	M10 Bolt or Nut Wrench—17mm	M12 Bolt or Nut Wrench—19mm	M14 Bolt or Nut Wrench—22mm

